



Condor Pacific Industries

Sub-miniature F-16 Series Rate Gyro

Condor Pacific's sub-miniature F-16 Series Rate Gyro was designed for the use on the flight control system on the F-16 fighter aircraft.

Condor Pacific PN 16100 was qualified to the F-16 procurement specification (16ZC006A) in conjunction with Hill Air Force Base. Over 2000 units have been delivered to the U.S. Air Force and many more units to foreign Air Forces.

PN 16100 gyros are individually and collectively interchangeable with the original Northrop gyros (16VC006-2) utilized for this application.

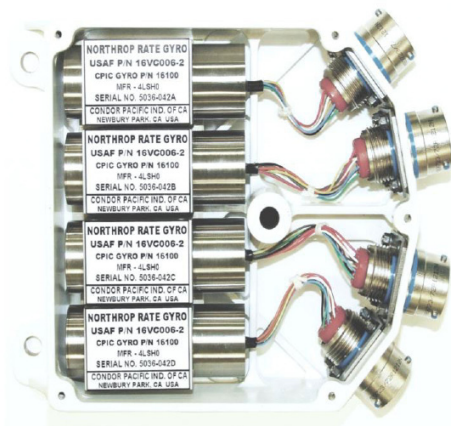
PN 16120 Quad boxes are available as shown.

Condor Pacific can perform acceptance tests on your gyro or quad package and replace gyros found to be out of specification limits. Additionally PN 16100 gyros can be repaired at our facility.

Condor Pacific maintains a Quality Assurance Program compliant with ISO 9001-2008, insuring the quality inherent in the design.

Cross Reference Chart

Item	NSN	Northrop PN	Condor PN
Gyros	6615010714513	16VC006-2	16100
Quad Gyro Package	6615010427834	16C0705-3	16120



Condor Pacific Industries, Inc.

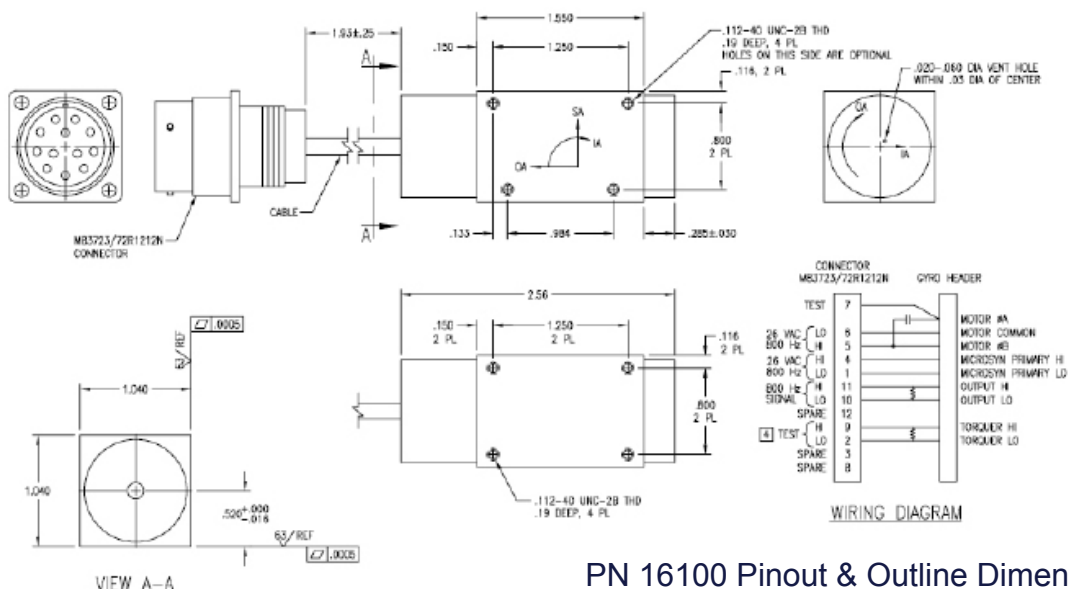
905 Rancho Conejo Blvd, Newbury Park, CA 91320

Phone: 818-889-2150 FAX: 818-889-2160 E-mail: sales@condorpacific.com

Cage Code 4LSHO

Specifications

Range Scale Factor Threshold Resolution Hysteresis In Phase Null Linearity Natural Frequency Damping ratio Linear Acceleration Sensitivity Cross Coupling Phase Shift	±300°/sec 0.020 VAC/°/Sec ±5% 0.01°/sec 0.01°/sec ±0.5°/Sec ± 1.5°/Sec 0.5% To Half Scale, 2.0% to Full Scale 47Hz Minimum 0.3 to 2.5 of Critical 0.1°/sec/g 0.05°/Sec/°/Sec Cross Axis & Spin Axis ± 10°	Over Temperature Range Over Temperature Range Over Temperature Range Over Temperature Range Over Temperature Range Over Temperature Range Over Temperature Range Over Temperature Range Over Temperature Range Over Temperature Range
Voltage (AC) Starting Power Running Power Warmup Time	26V, 800 Hz 2ø 4.0 Watts 3.35 Watts 60 Seconds at Temperatures above -40°F 90 Seconds at Temperatures below -40°F	
Voltage (AC) Load Resistance Output Phase Shift	26V, 800Hz. 20KΩ ± 1% Up to 6.6Volts, 800 Hz ± 10°	
Operating Temperatures Vibration Shock Acceleration Other Environments	-65°F to +160°F, transient to 250°F for 10 Minutes Max See 16ZC006A See 16ZC006A See 16ZC006A See 16ZC006A	Per MIL-STD-810 Per MIL-STD-810 Per MIL-STD-810 Per MIL-STD-810
MTBF Sealing Weight Self-Test – Torquer Scale Factor -- Spin Motor speed	12,000 hours Hermetic 150 grams 0.15°/Sec/mA, 150mA continuous, 600mA transient Spin synchronous detection by monitor motor phase 2	



PN 16100 Pinout & Outline Dimensions

Condor Pacific Industries, Inc.

905 Rancho Conejo Blvd, Newbury Park, CA 91320

Phone: 818-889-2150 FAX: 818-889-2160 E-mail:sales@condorpacific.com

Cage Code 4LSH0